



2025

CAPABILITY STATEMENT



VERSION 1

JONISHAN PTY LTD



CAPABILITY STATEMENT



Established 1995

CAPABILITIES

Jonishan offers comprehensive services in major and minor works, specialising in critical infrastructure projects for water, sewer, stormwater, and related facilities. Our expertise encompasses pipe laying, excavation, and construction requirements, including but not limited to canal repairs, subdivision reticulation, carrier mains, inspection pit (manhole) installation, bore pits, and pumping stations.

As a **fully accredited Sydney Water contractor**, Jonishan delivers high-quality solutions tailored to the needs of various clients, including companies of all sizes, developers, utility authorities, government departments, and property owners. Our capabilities extend beyond traditional civil works to include architectural rock and block walls, landscaping, and a wide range of civil services. With experience across major, minor, and residential projects, we are committed to delivering excellence in every aspect of our work.

Sydney Water & Hunter Water A2 Accredited Constructor

MS	Minor Works	S2	Sewer Standard DN 375 – 750mm
PE	PE Pipe System	W1	Water Reticulation DN 100 – 375mm
LP	Pressure Sewer Systems	W2	Water Supply DN 375 – 750mm
RW	Recycled Water DN 65-375mm	W3	Steel Pipeline 750 – 1200mm
S1	Sewerage Reticulation DN 150-300mm		

CLIENTS

For nearly 30 years, we've built enduring relationships with a wide range of clients. Jonishan is the premier choice for top-tier companies, developers, and those seeking expertise in intricate projects. Our track record showcases successful completion of various major, minor, and residential ventures for a diverse clientele.

**JOHN
HOLLAND**

ENVIROPACIFIC

jkWilliams

Interflow

**SEYMOUR
WHYTE**

DARACON
Group

lendlease

mirvac

AWJ
CIVIL

Comdain
Infrastructure

CPB
CONTRACTORS

Downer
Relationships creating success

Sydney
WATER
NSW
GOVERNMENT | Transport
for NSW

PLANT & EQUIPMENT

Jonishan prides itself on the high standards maintained on all company owned plant and equipment. All machinery is safe, fit for purpose and in excellent working order through a regular maintenance program. The machines are fitted with fall protection, emission reduction devices and noise attenuation to meet Safety and Environmental requirements.

All our operators are trained and ticketed to safely operate our machines. All plant, equipment, and vehicles are maintained by our in-house plant mechanics and qualified welders.

Our fleet of plant and equipment includes:

- Excavators ranging from 1.7T to 48T with a full set of attachments
- Backhoes / Skid Steers
- Truck and Dog
- Tippers and Trailers
- Manhole Formwork
- Crane Trucks
- Dumpers
- Hook Trucks & Bins
- Water Tanks
- Sucker Trucks
- Service Locators





OUR COMMITMENT TO CONTINUAL IMPROVEMENT

Jonishan has a fully implemented Quality, Safety & Environmental Integrated Management System to ensure continual improvement in all aspects of Health & Safety, Environment and Quality. Our management systems reflect our focus on the health, safety and environmental preservation of our sites and our workers, clients and communities we impact.



Our fully integrated management system is certified to ISO 9001:2015, ISO 45001:2018 & ISO 14001:2015 by Sustainable Certification.

SUSTAINABILITY

Jonishan was proud to have collaborated with John Holland, Sydney Water, and Boral on an initiative for a sustainable future. With annual sand consumption exceeding six times the natural production, innovative solutions like using recovered resources were crucial. John Holland and Sydney Water explored using blended recycled glass sand as pipeline bedding material, replacing up to 40% of natural sand with glass sand from curb-side recycling bins. Jonishan's role was to trial this recycled glass bedding sand as an eco-friendly alternative to natural sand, demonstrating its viability and quality. This collaboration showcased a significant step towards a more sustainable construction industry.



PROJECT PORTFOLIO

Jonishan's extensive experience and proven track record in the water, sewer, and civil engineering sectors speak for themselves. Over nearly 30 years of experience, we have successfully delivered countless projects that demonstrate our expertise, commitment to quality, and ability to deliver innovative solutions.

Our portfolio showcases a range of complex projects, from large-scale infrastructure developments to intricate civil works, highlighting our capability to meet diverse client needs and industry standards. Below, we present a selection of our notable projects that exemplify our proficiency and dedication to excellence in these critical areas.

With nearly 30 years of unparalleled experience, we bring a level of **Experience and Commitment you can rely on!** Our extensive track record reflects our dedication to delivering high-quality results and our ability to adapt and excel in a constantly evolving industry. Trust us to bring both depth of knowledge and steadfast reliability to every project we undertake.

The Northern Rd, Bringelly to Oran Park



Sydney Water Trunk Main
Client: LENDLEASE | VALUE: \$7Mil

Jonishan were contracted to Lend Lease for the installation of the Dual Main Section (SP1) of the Sydney Water Trunk main as part of the Southwestern Sydney Priority Growth Area, Package 1A. Pipe installation within roadways, shared pathways, driveways and electrical substations either by means of open excavation or trenchless methods.

The Sydney Water Trunk Main required 4952m of pipe to be installed, primarily as dual mains. Pipe type ranges from DN450 – DN750 DICL, OD508 – 1067 SCL, DN675 – 1050 RCP & DN750 GRP, laid at a depth range of 1.5 – 5m. NDD (Potholing) of all services crossed perpendicularly and, in some instances, parallel services.

Parramatta Light Rail



Potable and Recycled Water
Client: CPB DOWNER JV | VALUE: \$34Mil

Jonishan is proud to have been awarded the largest utility contract of the transformational Parramatta Light Rail project. This significant project by the NSW Government aims to serve the rapidly growing population in Western Sydney by transforming communities and enhancing the movement and connection of people along the new rail corridor. Jonishan was tasked with three combined utility packages across Harris Park, Parramatta, and Westmead, managing the relocation of critical infrastructure for Sydney Water (potable water and sewer) and Council stormwater assets, as well as infrastructure for Jemena, Telstra, Optus, AARNet, and AAPT.

The execution of these package works occurred in a complex urban environment with high community visibility, particularly in areas housing critical-service clients such as Westmead Children's and Cumberland Hospitals. Our project team expertly managed numerous risks and challenges, including timely availability of

designs, known and unknown services impacting design alignments, tight delivery timeframes, and ensuring minimal disruption to essential services. Additional complexities included managing construction impacts like noise, dust, and congestion, access restrictions, traffic flows, unknown services, heritage finds, and working below the water table near the Parramatta River.

The Northern Rd & Bringelly Rd, Bringelly



Watermain Adjustment

Client: LENDLEASE | VALUE: \$10Mil

Jonishan was awarded the Sydney Water Subcontract by Lend Lease to carry out the watermain adjustments on Stage 2 of the Northern Rd & Bringelly Rd Upgrade. This RMS federally funded project consists of upgrading approx. 11.5km of The Northern Rd to a four-lane divided road with slip lanes and intersection upgrades.

Jonishan works include installation of 8.7km of pipe within existing roadways, residential properties, shared path & driveways and electrical sub stations. Pipe type ranges from DN100 – DN450 DICL, SCL, PE100, PVC and DN600 RC. Night works required for road crossing and connections.

Yeomans Estate IOP, North Richmond



Interim Operating Pump Station

Client: JKWilliams | VALUE: \$1Mil

A close working relationship with JK Williams saw Jonishan awarded the contract to supply & install wastewater IOP's and Pump Well at Yeomans Estate in North Richmond. The project included bulk earthworks and installation of the IOP and Pump Well including testing and assistance with commissioning, associated rising and gravity sewer mains, input diversion structures, output connection to existing reticulation and provision for gravity overflow.

Wastewater IOP & Pump Wet Well supply & installation included 8 x chambers DN1800/1200/1050 from 1.2 – 7.0m depth plus AKS lining where required. A DN2100 Humeceptor Reservault 40m long approx. 6m depth

with twin DN1050 access risers and stainless steel ladder access. A DN1800 Flyght Packaged Pump Station approx. 7m depth with internal valve chamber and 2 x Flyght Adaptive N Type submersible pumps, monitoring and control equipment and odour filter with remote monitoring site. A level 2 electrical connect from kiosk to power supply network was installed.

Supporting structures constructed by Jonishan were a 25m potable watermain DN50 including connection, PRZD and hydrant. Also, a 630m gravity sewer main using DN225/300 PVC, a 70m rising sewer main from DN110 PE and 55m of ventilation lines of DN150 PVC were installed.

Old Pitt Town Rd, Box Hill



Water Main Lead-In

Client: DUBBO CITY COUNCIL | **VALUE:** \$10Mil

In 2021, Jonishan was awarded the design and construct contract for a non-potable pipeline project, part of the Water for the Future Strategy aimed at improving water security in Dubbo during drought. Jonishan's scope involved building a 20km pipeline to transfer groundwater from Dubbo's recreational bores to the John Gilbert Water Treatment Plant, requiring complex coordination with trades, civil contractors, and Dubbo Regional Council.

The installation used road and rail thrust bores, HDD and open cut creek crossings, and high-pressure gas main crossings. The project included trenching, laying, and backfilling O-PVC pressure pipes (DN300 to DN450), installing isolation, air, and scour valves, and restoring road verges, driveways, and roads. Effective stakeholder management and authority liaison were crucial.

This project demonstrated Jonishan's capability in managing complex infrastructure projects while maintaining strong stakeholder relationships and meeting regulatory requirements.

Western Sydney Airport, Badgery's Creek



Sewer Main

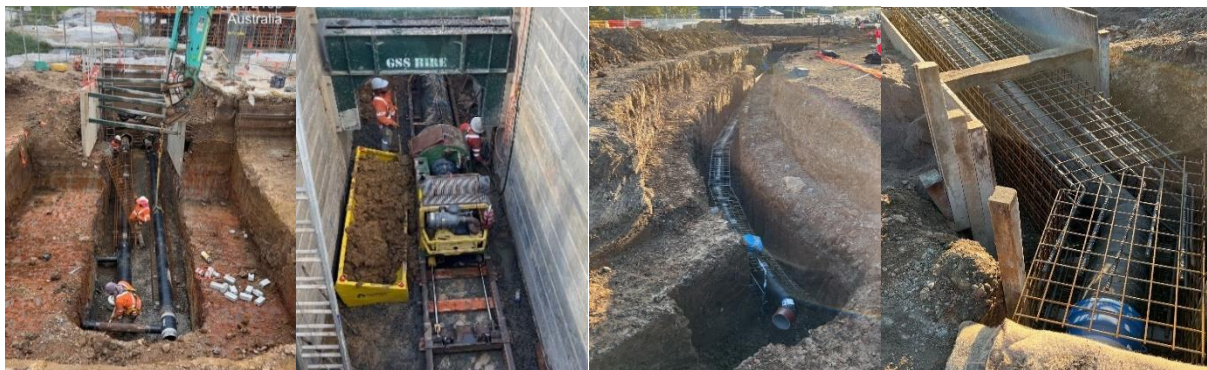
Client: SEYMOUR WHYTE BMD JV | **VALUE:** \$4Mil

In 2023, Jonishan was contracted to undertake a Sewer Main Reticulation project as part of a broader infrastructure initiative for the Western Sydney Airport. The project involved the installation of welded PE pipe to depths of up to 8m, as well as installation of maintenance structures.

Extensive testing and quality assurance measures were conducted, including compaction, bearing capacity, concrete, vacuum, air pressure, hydrostatic, and mechanical destructive testing on pipe welds. Jonishan also provided temporary works design, formwork documentation, and shop drawings for approval by a chartered civil/structural engineer before execution.

This project highlighted Jonishan’s capability in delivering complex sewer infrastructure projects while maintaining high standards of quality and regulatory compliance.

Memorial Avenue, Kellyville

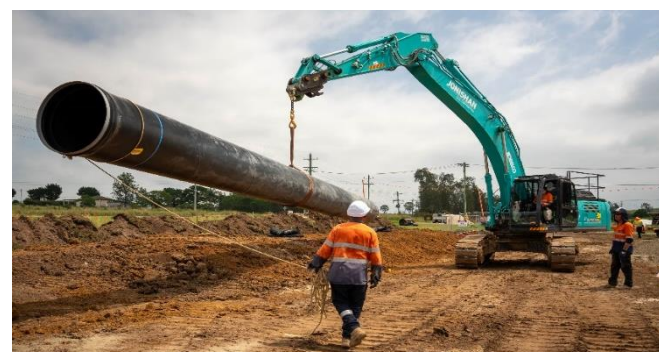


Sewer, Potable and Recycled Water
Client: DARACON | VALUE: \$13Mil

Jonishan was contracted to install Potable and Recycled Water for the Memorial Avenue upgrade project, a 2.2km road upgrade that connects Old Windsor Rd with Windsor Rd, serving as a vital link for communities. The project involved installing DI/CL, MS/CL, and PVC pipes to facilitate the distribution of both potable and recycled water. We coordinated closely with various stakeholders and authorities to ensure compliance with design specifications and quality standards.

The successful completion of this project demonstrates Jonishan's commitment to delivering robust and resilient water infrastructure. We are proud to have contributed to improving water distribution and supporting environmental sustainability initiatives in our community.

**Connecting
Communities
Since 1995**



THE JONISHAN TEAM

Jonishan employs only the best from site labour through to site management. Our director John has a hands-on collaborative approach in communicating with staff. The cohesion between management and crews is essential in delivering client & employee satisfaction. We have a range of personnel available to work on civil projects of any size and scope.

We believe that our most important assets are the people we employ. Our experienced and professional team includes project managers, engineers, supervisors, health, safety and environment officers and mechanical tradespeople, backed by a dedicated management and administration team.

MANAGEMENT & ADMINISTRATION TEAM

Our experienced and professional team consists of Managing Director, Construction Manager Operations Manager, Manager Insurance, Business & Resources, Financial Controller, Admin/Accounts Assistant, QSE Manager, Estimator, Administration & Estimating Assistants, Project Managers, Engineers & Site Supervisors.

WORK CREWS

Jonishan work crews are highly skilled and strive for innovation and efficiency in every task. Each crew has been trained and accredited to work to the high standards set by utilities including Sydney Water (major and minor works), Roads & Maritime Services and developers.



INSURANCE

Jonishan not only has a fully implemented QSE management system, but we also have comprehensive insurance cover for all risk aspects including:



Contract Works up to
Project Value



Public & Product Liability up to
\$20,000,000



Vehicle, Plant & Machinery with Third
Party Liability up to
\$50,000,000



Professional Indemnity up to
\$10,000,000



Hire-in plant up to
\$500,000

Note:



T: 02 8608 1488
M: 0408 961 152
E: infor@jonishan.com.au
W: www.jonishan.com.au
P: PO Box 6566 Norwest NSW 2153
A: Suite 202, 29-31 Solent Cct, Norwest NSW 2153